

# BBC Anglia



## SISTER VESSELS

BBC Iceland  
BBC Denmark  
Skafthafell  
BBC Canada

## MAIN DATA

**Built:** 1997  
**Call sign:** V2HA6  
**IMO number:** 9137739  
**Flag:** Antigua & Barbuda  
**Home port:** Leer  
**Type:** Multipurpose Tweendecker  
**Class:** GL + 100 A5 E3 G + MC E3 AUT  
**Special features:** strengthened for heavy cargoes, equipped for carriage of containers, equipped for carriage of dangerous goods

## DIMENSIONS

**Length overall:** 100.60 m  
**Length between pp:** 93.80 m  
**Breadth moulded:** 16.60 m  
**Depth to main deck:** 8.10 m  
**Dwat / Draft summer:** 4,820 mt on 6.40 m  
**Height above keel:** 40 m  
**GT / NT:** 4,078 / 2,009  
**Panama GT / NT:** - / 3,701  
**Suez GT / NT:** 4,167 / 3,148

## GEAR

**Cranes:** 2 cranes, each up to 60 mt, combinable up to 120 mt

## HOLDS / HATCHES

**Holds:** 1  
**Hold 1:**  
dimensions: 57.80 x 13.40 x 8.93 m  
hold form: hold in narrowing in fore part of the hold deck type: tweendeck  
Pos.1: Lower Deck: 5.51 m; Upper Deck: 2.84 m  
Pos.2: Lower Deck: 4.07 m; Upper Deck: 4.28 m  
Pos.3: Lower Deck: 2.97 m; Upper Deck: 5.38 m

**Hatches:** 1

**Hatch 1:**  
dimensions: 57.80 x 13.40 m  
opening system: Kvaerner folding type / 8 segments (4/4)

## CAPACITIES

**Cubic capacity:** 6,800 cbm ( 240,140 cbft)  
**Grain capacity:** 240,140 cbf  
**Bale capacity:** 239,856 cbf  
**Floor space on deck:** 855 sqm  
**Floor space under deck:** 1,480 sqm

## CONTAINER DATA

**Container capacities:**  
in holds: 127 TEU  
on deck: 237 TEU  
total: 364 TEU  
**Alternative:**  
in holds: 56 FEU + 15 TEU  
on deck: 112 FEU + 13 TEU  
total: 168 FEU + 28 TEU

**Tanktop loads:** TEU: 72 mt  
FEU: 90 mt  
**Hatchcover:** 40 MT TEU and 50 MT FEU  
**Reefer plugs:** 30 - all on deck

## DECK STRENGTH

**Hatchcover:** 2.50 mt/ sqm  
**Tanktop:** 17.50 mt/ sqm  
**Tweendeck:** 2.50 mt/ sqm

## TANK CAPACITIES

**HFO:** 471 mt  
**MGO:** 106 mt  
**Fresh water:** 83 mt  
**Ballast water:** 1,846 mt

## MACHINERY

**Main engine:** MAN 9 L 32/40  
**Auxiliary engine:** 2X MAN 460 KVA - 390 KW - 50 HZ  
**Shaft generator:** 800 KVA / 640 KW  
**Bow thruster:** 300 KW

## Fresh water generator:

5.0 mt per day  
**Propeller:** variable pitch propeller  
**Ventilation:** 30 airchanges per hour

## IMO CARGO

**On deck:** All classes  
**In holds:** 2.1 - 2.3; 3; 4.1 - 4.3; 5.1; 6.1; 8; 9  
Class 1 cargoes only within reach of water sprinler system in forward part of the hold ( abt 32 m)  
Class 7 cargoes are always excluded

## NAUTICAL EQUIPMENT

Fully GMDSS fitted, 2 radar, 2 GPS, GYRO, Autopilot, SATCOM B+C; GSM-mobilephone

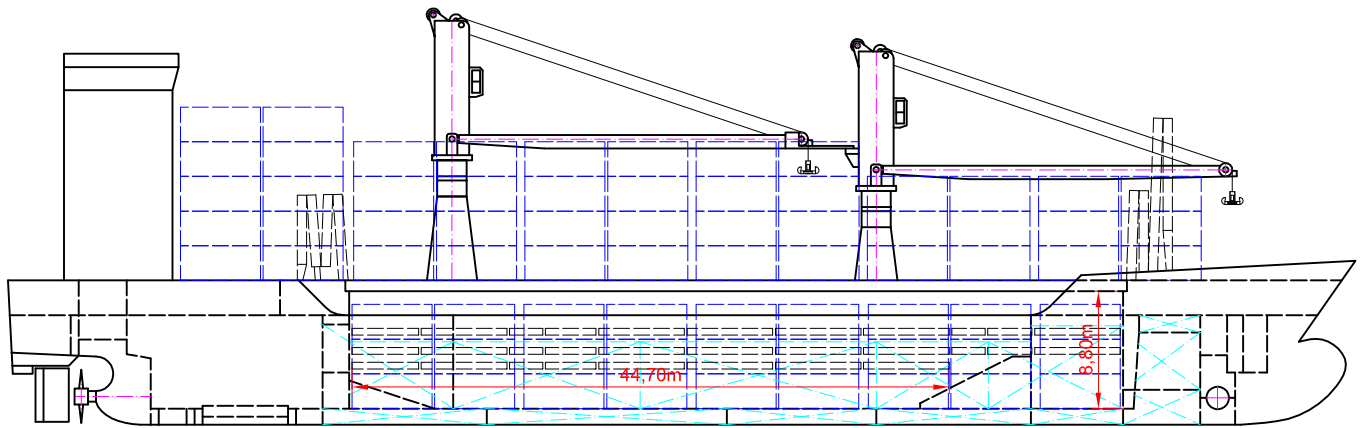
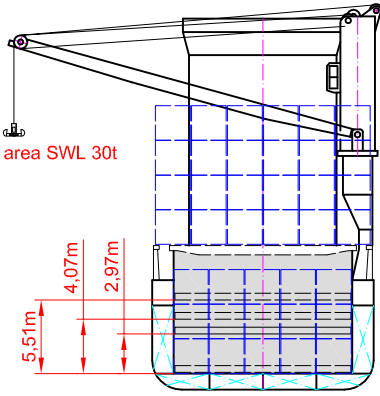
## SPEED / CONSUMPTION

**At sea loaded:** 15.0 kn on 15.5 mt IFO 380 per day  
**In port with gear:** 1,8 mt MGO per day  
**In port without gear:** 1,0 mt MGO per day  
**Boiler fuel cons. in port:** + 1,0 mt MGO per day  
**Shaft generator off due to adverse weather:** + 1,0 MT MGO PER DAY

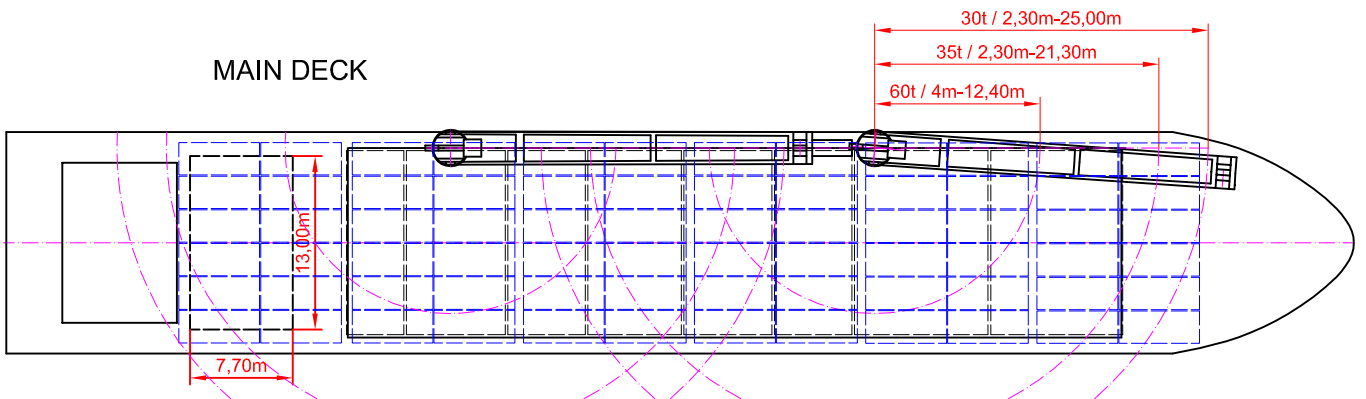
SHIP'S NAME	M/V BBC Anglia
Phone	+49 491 9 25 20-90
Telefax	+49 491 9 25 20-99
Date	29.07.09
E-mail:	chartering.leer@bbc-chartering.com

All details are about and believed to be correct but given without guarantee and they must not be used as basis for charterparties or contracts without BBC's explicit written authority

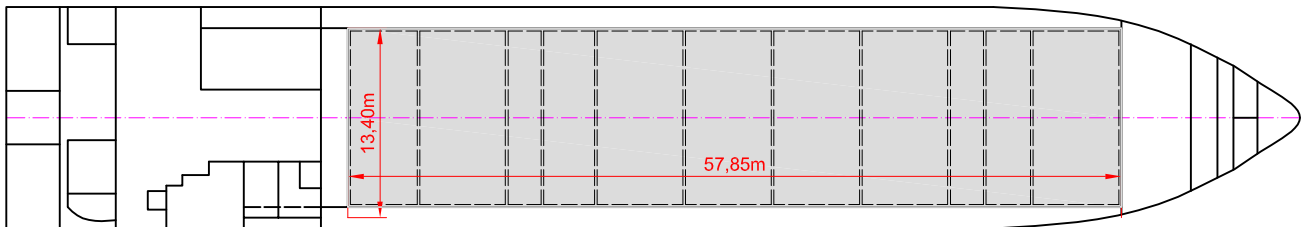
Crane working area SWL 30t



MAIN DECK



TWEENDECK



HOLDS & DOUBLE BOTTOM

